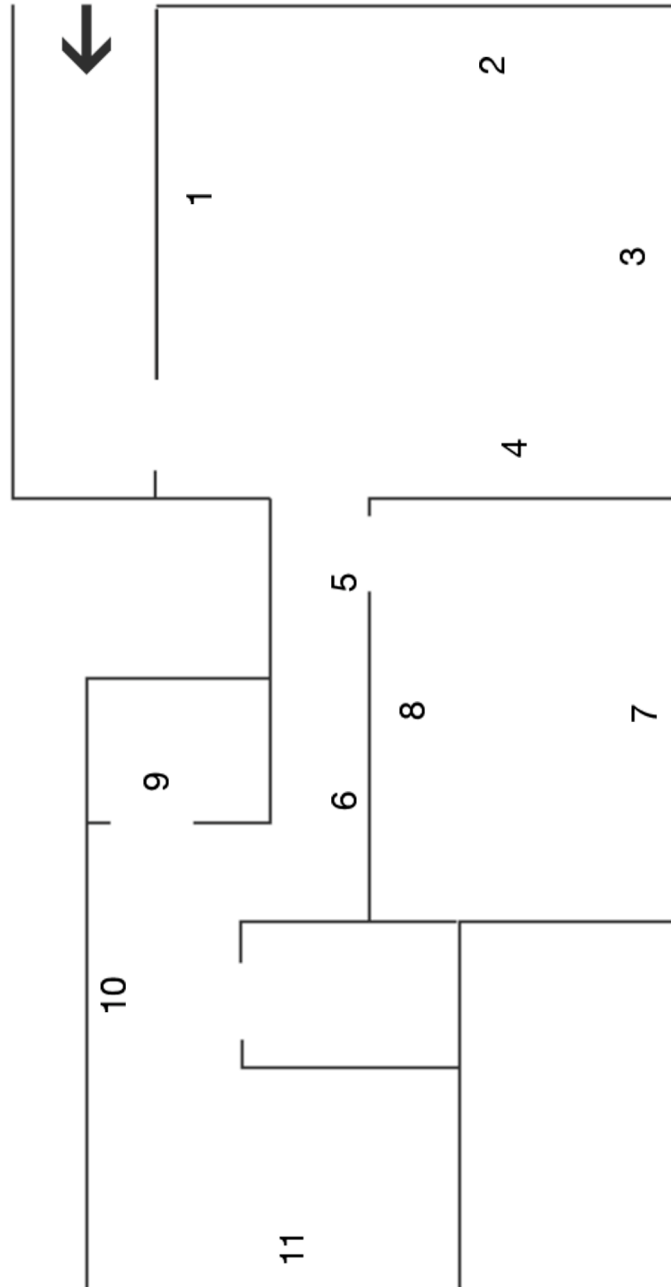


# 13 Gladstone Place

3 -25 May 2008

New work by Lucy Cash, Oli Evans, Michael Hutson, Frances Scott



## **The Front Room**

### **1. Frances Scott, *A Sealed Room* 2007**

Pencil, oyster shells, acrylic stand, shelf and curtain

*A Sealed Room* is a development from an earlier series of miniature etchings *Paper ghosts*. Each oyster shell presents the negative space of a shipwreck, the tragic 'event' made epic and miniature through its documentation. The work extends the drawn image to become 'impossible object' and embalmed souvenir.

£30 each shell.

### **2. Lucy Cash and Frances Scott, *The Purpose of Things* 2008**

chair, table, easel, plastic sheeting, overalls, assorted objects

*The Purpose of Things* is a work made in the front room. There has been a presence here, perhaps anonymous, perhaps known. But either way, the 'I' that was here has now departed. Behind them they have left a series of truncated activities. What was once possible has now been thwarted. This is an abandoned industry.

### **3. Lucy Cash, *There Is Over There* 2008**

35mm colour hand prints

*There Is Over There* is a selection of images from a series which considers gestures created by still and moving bodies in relation to domestic spaces.

£80 each print (all prints are limited edition, 10 x 6 ¾ inches printed on 10 x 8 paper with original, hand made frames). £40 mounted/unframed.

### **4. Lucy Cash, *A Forest Is What Exists Between The Trees* 2008**

35mm colour hand prints

*A Forest...* considers an altered sense of time and space in the heart of a forest.

£80 each print (all prints are limited edition, 10 x 6 ¾ inches printed on 10 x 8 paper with original, hand made frames). £40 mounted/unframed.

## **The Upper Hallway**

### **5. Frances Scott, *A carbon people* 2008**

Ink, carbon paper and charcoal on card, bell-jar

*A carbon people* is a crowd of charred figures captured beneath the heavy glass of bell-jar. These silent body compounds are not the basis for all life, but beneath their dome – their world – they trace a line between many states (abrasive, soft, transparent, opaque) that exist separately and in the same moment.

### **6. Frances Scott, *LIKE THE MOON* 2008**

Acrylic on board, assorted frames

*LIKE THE MOON* begins with the garden at night, where stories and their shapes may be obscured in shadow. The work takes moments from Jorge Luis Borges's short story *The Garden of Forking Paths* (1941), and his labyrinth as both physical reality and idea. *LIKE THE MOON* is a collection of paintings that present a forking and fissured tale, like a maze, or a line of images that split in time not space.

£100 (small), £150 (medium), £200 (large).

## **The Bedroom**

### **7. Michael Hutson, *Dream Series 3 & 12* 2007**

digital photograph on crystal

Michael's *Dream Series* is inspired by the memories of dreams when he was seriously ill in a coma. He wanted to continue the coma theme, maybe to eradicate the demons of his illness. The full series of 12 photographs were taken over a particular period of time and attempt to express a year in a dream world when visual life was in a state of trance and illusions.

Dream 3 (£250)

Dream 12 (£250)

### **8. Michael Hutson, *Brighton series* 2006**

digital photograph on canvas

Michael's *Brighton Series* was taken just days before he fell into a coma. He was in pain and could not sleep. He would walk along the seafront, watching the sunrise. When he looked through the viewfinder he found that he didn't want to focus, it felt natural to leave it blurred. He didn't realise he had taken these photographs until he came home from hospital three months later.

Seagull (£95)

Amusements (£105)

Café (£155)

## **The Cupboard Under the Stairs**

### **9. Lucy Cash, *A Place Less Imaginable* 2008**

A work made for a voice and a small space.

(sound and video loop. 15 minutes)

*A Place Less Imaginable* is a work made for an unseen voice in the hallway cupboard. The voice describes an imaginary city which is part story and part philosophical conundrum. Text adapted from *The Ones Who Walk Away from Omelas* by Ursula Le Guin. Voice : Gerard Bell.

## **The Lower Hallway**

### **10. Michael Hutson, *Brighton series* (cont)**

Jogger (£175)

Sandy Pier (£95)

## **The Kitchen**

### **11. Michael Hutson, *Brighton series* (cont)**

Beach Huts (£175)

Fisherman (£95)

Swimmer (125)

Tent (£105)

With thanks to Ted, Jan and Julie Pierce, Ava Hutson, Oli Evans, Christine Scott, Steve Wald, Katerina Radeva, Ole Birkeland, Colin Schlapobersky, Simone Boux, Rajni Shah, Catherine Bennett, Mem Morrison Company, Fabrica, Claire Soper, Ian Richards and Cheryl Pierce.

## BIOGRAPHIES

**Lucy Cash** is an artist with a diverse art practice working across live performance and moving image. Beginning her career with a three minute commission from the BFI / FilmFour, her subsequent work has included artists' film and video projects for gallery exhibition and site specific spaces as well as single screen works, radio and live performance. Her work contains both documentary and fictional elements and involves a keen attention to gesture and choreography. She is an associate artist with Artsadmin and an associate member of Goat Island performance company. Lucy graduated from Bristol University in 1991 and lives in London.  
[www.lucycash.com](http://www.lucycash.com)

**Oli Evans** is a software engineer, website designer and avid collector of sound. He started a live-music and performance night in South London in 2005 and works regularly with artists on a range of online projects. During the May Festival, Oli will be in residence at 13 Gladstone Place, sifting through his record collection and offering up some sounds. Oli was born in London in 1982 and graduated from Goldsmiths, University of London in 2004. He lives and works in London.  
[theinterestedreader.co.uk](http://theinterestedreader.co.uk)

**Michael Hutson** is a barber and photographer who has had exhibitions in Barcelona, London and Brighton. He has a commercial portfolio that includes Lonsdale, Uhlsports and Umbro. Michael was born in Brighton and his inspiration is based largely on his experience of living and working in his home town. His recent work is influenced by a sense of dislocation and the discovery of alternative perspectives occasioned by a serious illness and a long spell in a coma. Michael graduated from Bournemouth College of Art in 1993. He lives and works in Brighton.  
[www.jaminc.info](http://www.jaminc.info)

**Frances Scott** is an artist whose work uses opposite processes of accumulation and dispersal, excavation and burial, to generate images and documents. Recent work has looked at ways in which repeated gestures both make and, at the same time, dissolve the image – signalling a peculiar fade, evaporation, and eventual disappearance. She is currently working on a cycle of drawings that conjure shadows in epic landscape, the umbra of eclipse and x-ray photography. Frances was born in Cumbria in 1981 and graduated from the Courtauld Institute of Art in 2003. She lives and works in London.  
[www.abyme.org.uk](http://www.abyme.org.uk)

Many of the pieces in this exhibition are limited edition or part of a continuing series and the artists are happy to discuss special commissions and requests (size of print/framing, etc). Please ask the invigilator, visit the websites or email [artists@whiteflamegreen.net](mailto:artists@whiteflamegreen.net) for further information.

[www.13gladstoneplace.org](http://www.13gladstoneplace.org)